



# SWING

(South Wing Information, News and Goings-on)

**A monthly update for employees, physicians and volunteers as LMH prepares to care for South-Wing patients**

## South-Wing facts

- Square feet: 136,000
- New patient rooms: 90, all private
- Beds: 90
- Toilets: 120
- Sinks: 300
- Rebar: 373 tons
- Concrete: 8,500 cubic yards
- Structural steel: 1,090 tons
- Planning began: 1998
- Building began: May 2007
- Building ends: November 2009
- Current crew: 78 construction workers
- Contractor hours thru June 1: 90,074
- Subcontractor hours: 265,888
- Lost-time accidents: None
- First-aid cases: 2
- Construction contractor: HMMH
- Subcontractors: 47
- Architect: HDR
  
- Reason for construction:
  - State-mandated seismic standards
  - Population growth
  - Improving quality, safety, satisfaction
  
- Cost: \$185.5 million, includes new wing and related projects, like new central-utility plant, inpatient-pharmacy remodel, addition of a morgue, expansion of information technology, a new kitchen and dining room, relocation of biomedical engineering and laundry
  
- Funding: \$150 million in bonds; \$20 million in fundraising; the remainder from LMH cash reserves
  
- Local art pieces commissioned: 110

## SWINGING INTO THE SOUTH WING

Welcome to the first issue of "SWING" (South Wing Information, News and Goings-on). This new publication is yet another way LMH is keeping staff, physicians, volunteers and others informed about plans for populating the biggest expansion in the hospital's 57-year history. Over the next many months, we'll provide an overview and helpful information in "SWING" about the tasks and teamwork in which LMHers are engaged to facilitate moves, remodels, new systems, caring for patients in new beds and more.

The activation effort – as was its 10-plus-years' planning and construction phase – is of such a magnitude that everyone's got to stay current. It's vital as we continue and grow the provision of personal, quality care in a safe environment. There is no doubt it will take everyone's contribution as December nears – yes, December – to care for patients in 90 new, private, medical-surgical beds; occupy a new emergency department; create a new kitchen and dining room; and continue caring for ICU and maternity patients in their current locations. And that's just to name a few... In all we expect to be operating with a maximum capacity of 164 beds at the east campus, which should help considerably as LMH tackles the coming winter patient census and ED activity.

Please stay tuned, keep current, and don't hesitate to ask should there be any questions. There will be many avenues for questions and answers. Your department managers and directors are available, as is the new South-Wing Hot Line, ext. 7878. It's been set up for questions, comments and suggestions. The electronic-employee-bulletin board, [www.lmhemployees.org](http://www.lmhemployees.org), has postings on South Wing and other related activities, as does the electronic-physician-bulletin board, [www.lmhmds.org](http://www.lmhmds.org). Thanks in advance for all the efforts and putting our patients at the heart of our work.

Mark Sey,  
VP/CAO

## COUNTDOWN TO KEY TURNOVER (NOV. 1): 125 DAYS!

June							July							August						
S	M	T	W	Th	F	Sa	S	M	T	W	Th	F	Sa	S	M	T	W	Th	F	Sa
		X	X	X	X	X				1	2	3	4							1
X	X	X	X	X	X	X	5	6	7	8	9	10	11	2	3	4	5	6	7	8
X	X	X	X	X	X	X	12	13	14	15	16	17	18	9	10	11	12	13	14	15
X	22	23	24	25	26	27	19	20	21	22	23	24	25	16	17	18	19	20	21	22
28	29	30					26	27	28	29	30	31		23	24	25	26	27	28	29
														30	31					
September							October							November						
S	M	T	W	Th	F	Sa	S	M	T	W	Th	F	Sa	S	M	T	W	Th	F	Sa
		1	2	3	4	5					1	2	3	①	2	3	4	5	6	7
6	7	8	9	10	11	12	4	5	6	7	8	9	10	8	9	10	11	12	13	14
13	14	15	16	17	18	19	11	12	13	14	15	16	17	15	16	17	18	19	20	21
20	21	22	23	24	25	26	18	19	20	21	22	23	24	22	23	24	25	26	27	28
27	28	29	30				25	26	27	28	29	30	31	29	30					

## TEAM UPDATES

### Orientation/Human Resources

The charge of the Orientation/HR team is to develop and implement an orientation program for the new South Wing. The members of our team are Mark Wallace, Wanda Ketcherside, Lori Riley-Weigel, Cindy DeChance, Linda Brown, Sarah Beasley, Donna Schulz and Kenny Teranishi.

We are putting together orientation schedules for direct patient-care givers, indirect patient-care givers, volunteers and physicians. There will also be a special orientation for the staff from med/surg and the emergency department that will be moving into the South Wing. Currently the team is organizing and collecting information that will be included in the orientation presentations and looking into morale-building activities to help facilitate the move, (Donna Schulz, ext. 7609).

### Patient Care

The Patient-Care Subcommittee is co-chaired by Kim Hafey, (ED nursing director) and Lisa Kerner, (nursing-project coordinator). Members represent a variety of departments and include Dave Mack, Sandy Atwater, Mike Lindsey, Becky Olvera, Donna Schulz, Shelly Mason and Becky Sanders. Their responsibilities are addressing the actual move-in process and operational plans for the South-Wing patient-care areas. To view Patient-Care-Subcommittee milestones completed so far, you can go to L:\LMH\PROJECTS & REPORTS\Activation Team\Patient Care Subcommittee\Patient Care Subcommittee Completed Milestones. The ED and med/surg nursing-management teams are actively engaged in the South-Wing-transition process, communicating both the known and anticipated needs of their departments with the Patient-Care Subcommittee. The common goal is to ensure the smoothest transition possible as we get ever-closer to the opening of the beautiful new South Wing, (Lisa Kerner, ext. 7938, and Kim Hafey, ext. 7657).

### Marketing/Communications

Activities to date include "SWING," the monthly South-Wing newsletter; an electronic-employee-bulletin board ([www.lmhemployees.org](http://www.lmhemployees.org)); an electronic-physician-bulletin board ([www.lmhmds.org](http://www.lmhmds.org)), an informational South-Wing Hot Line, ext. 7878; developing an up-to-date facility map for new east and current west campuses; recruiting a new service area of volunteers to escort patients and visitors through South and North wings; planning for an open house/tour/celebration-type event for staff, physicians, volunteers, donors and community members; and identifying spaces for original art in the new wing and commissioning local artists. Team members include Joanne Augusto, Sarah Beasley, Linda Brown, Lori Horan, Lynn McCarty, Tammy McGeorge, Donna Shaw, Roger Vincent and Carol Farron, (Carol Farron, ext. 7535).

### Others

In addition to the three teams above, two other teams, support services and Information Services/Telecom, are planning activities specific to their areas of expertise that will allow LMH to care for patients in the new wing. All five teams are working through the coordination of the Comprehensive-Activation Team (CAT). The coordination efforts are mammoth. Watch this space for regular updates.

## ON THE SCENE



**Nancy Reich,**  
**project manager**  
Architectural focus and main liaison between LMH and the main construction team



**Chris Dickey,**  
**project manager**  
Design, mechanical, electrical and plumbing focus and liaison with construction teams in these areas

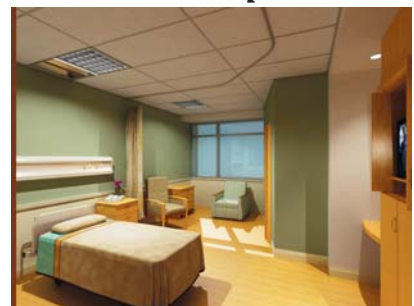


**John Flores,**  
**project technician**  
Special tasks and works with contractors on North-Wing structure and utility interfaces



**Chelle Bryan,**  
**project analyst**  
Accounting and liaison with LMH finance department and construction team

## Same-handed patient rooms



All of the 90, new patient rooms are private and same sided; that is, every room has every single item in the same place. This is done to reduce the risk of medical errors. The patient rooms were also designed so patient-care activities take place in the first half of the room, and the second half (beyond the bed) is for family.



**EXT. 7878, SOUTH-WING HOT LINE**

**Anytime for questions, comments,  
suggestions, rumor control**

**Or visit... [www.lmhemployees.org](http://www.lmhemployees.org) ■ [www.lmhmds.org](http://www.lmhmds.org)**